

# LEADTEK Wireless GPS Receiver User's Manual

GPS 9537



## Contents

<b>1. INTRODUCTION.....</b>	<b>1</b>
<b>1.1. OVERVIEW .....</b>	<b>1</b>
<b>1.2. MAIN FEATURES .....</b>	<b>1</b>
<b>2. TECHNICAL SPECIFICATIONS .....</b>	<b>2</b>
<b>2.1. ELECTRICAL CHARACTERISTICS .....</b>	<b>2</b>
<b>2.2. OTHER CHARACTERISTICS .....</b>	<b>3</b>
<b>2.3. FIRMWARE CHARACTERISTICS.....</b>	<b>4</b>
<b>3. OPERATION .....</b>	<b>4</b>
<b>3.1. HARDWARE DESCRIPTION.....</b>	<b>4</b>
<b>3.2. TURN ON/OFF .....</b>	<b>5</b>
<b>3.3. CHARGING .....</b>	<b>5</b>
<b>3.4. BLUETOOTH COMMUNICATION .....</b>	<b>5</b>
<b>3.5. GPS.....</b>	<b>6</b>
<b>3.6. PIN CODE .....</b>	<b>6</b>
<b>4. NOTICES.....</b>	<b>6</b>
<b>4.1. GLOBAL POSITIONING SYSTEM.....</b>	<b>6</b>
<b>4.2. AIRCRAFT AND HOSPITALS .....</b>	<b>6</b>
<b>4.3. HEAT REFLECTIVE SHIELDS .....</b>	<b>6</b>
<b>4.4. IMPORTANT.....</b>	<b>6</b>
<b>5.5 BATTERY .....</b>	<b>7</b>
<b>5.6 FCC .....</b>	<b>7</b>
<b>APPENDIX A SOFTWARE INSTALL.....</b>	<b>8</b>
<b>APPENDIX C INSTALLING WINFAST NAVIGATOR FOR POCKET PC.....</b>	<b>18</b>
<b>APPENDIX C TEST REFERENCE FOR ONLY .....</b>	<b>22</b>

## 1. Introduction

### 1.1. Overview

The Leadtek 9537 Wireless GPS receiver is a Global Positioning System Receiver with Bluetooth wireless technology. This wireless GPS receiver allows you to receive GPS data on mobile handheld wirelessly. By sending GPS position data over Bluetooth, you can position the receiver for the best possible reception all without wires. The advent of wireless GPS receiver will become the next level of GPS receivers.

The Leadtek Wireless GPS receiver integrates Bluetooth module into GPS device. It shows the high performance, low power consumption, easily portable, rechargeable & removable battery function and wireless data transmission. If you have a Pocket PC or other portable devices enabled with Bluetooth function, for example iPAQ 3870/3970 and SONY Ericsson T68 mobile phone, you can take advantage of your device's Bluetooth capability to wirelessly add GPS positioning technology. When you choose suitable navigation software, you can apply to personal, vehicle tracking, and marine navigation.

If you use this wireless GPS receiver, you will ignore the messy cords and antenna and add the portability of your Pocket PC. In addition, This wireless GPS receiver can change the exhausted battery to full battery like battery of mobile phone.

### 1.2. Main Features

- ◆ 12 Channels "All-In-View" Tracking
- ◆ Position accuracy of 10 meters 2D RMS
- ◆ Cold/Warm/Hot Start Time: 45/38/8 Seconds
- ◆ Reacquisition Time: 0.1 seconds
- ◆ RF connector for external GPS antenna
- ◆ Support Standard NMEA-0183
- ◆ Support Trickle Power mode Power Saving
- ◆ Compatible with Bluetooth devices with Serial Port Profile (SPP)
- ◆ Superior Sensitivity for Urban Canyon and Foliage Environment
- ◆ Small, sleek, and lightweight design easily fits in your hand
- ◆ Two LEDs indicating Bluetooth and GPS activity.
- ◆ Lithium-ion battery lasting full working day typical use
- ◆ On/off push button
- ◆ Dimension: 1.77" x 3.27" x 0.71" ( 45mm x 83mm x 18mm )

## 2. Technical Specifications

### 2.1. Electrical Characteristics

	Items	Description
Chipset	GSP2e/LP	SiRF starII LP technology
<b>General</b>	Frequency	L1, 1575.42 MHz
	C/A code	1.023 MHz chip rate
	Channels	12
<b>Accuracy</b>	Position	10 meters, 2D RMS
		7 meters 2D RMS, WAAS corrected
		<5 meters(50%), DGPS corrected
	Velocity	0.1 meters/second
	Time	1 microsecond synchronized to GPS time
<b>Datum</b>	Default	WGS-84
	Other	selectable for other Datum
<b>Acquisition Rate(Open Sky &amp; Stationary Requirements)</b>	Reacquisition	0.1 sec., average
	Snap start	2 sec., average
	Hot start	8 sec., average typical TTFF
	Warm start	38 sec., average typical TTFF
	Cold start	45 sec., average typical TTFF
<b>Acquisition Sensitivity</b>	Hot	23 dB-Hz
	Warm	28 dB-Hz
	Cold	32 dB-Hz
	Tracking Sensitivity	16 dB-Hz
	<Note>32dB Hz is equivalent to -172 dBW	
<b>Dynamic Conditions</b>	Altitude	18,000 meters (60,000 feet) max.
	Velocity	515 meters/second (1000 knots) max.
	Acceleration	4g, max.
	Jerk	20 meters/second <sup>3</sup> , max.
<b>Power</b>	Operational Power	<b>3.3VDC±10%</b> (from internal Lithium-Ion battery pack)
	Input Power	5VDC±10%
	Battery Source	Rechargeable and removable 900mAh Lithium-Ion battery with 5V DC input charging circuit.
	Battery Charging	Full charge 3 hours
	Backup Power	3.3V ( internal on board rechargeable backup battery)
	Operational Current & Power Consumption	Please refer to the following table
<b>Interface</b>	Connection:	Communication via Bluetooth Serial Port Profile(SPP)
	Protocol messages	NMEA-0183 Version 2.20 output protocol

	Output message	Default output format: GGA(1sec), GSA(5sec), GSV(5sec), RMC(1sec),VTG(1sec)
--	----------------	---

### ■Operational Current & Power Consumption

Measure of Power Consumption		
Status	Current (mA)	Power Consumption(mW)
Power On	75	300
GPS connect BT	70	280
LR-9537 Fix without connecting BT Device.	20	80
LR-9537 Fix with connecting BT Device	100	400

## 2.2. Other Characteristics

	Items	Description
<b>Environmental Characteristics</b>	Humidity range	5% to 95% No condensing
	Operating temperature range	-20°C to +60°C (-4°F to 140°F)
	Battery discharge	-20°C to +60°C (-4°F to 140°F)
	Battery charge	0°C to +40°C (32°F to 104°F)
	Short period storage temperature (< 1 month)	-20°C to +50°C (-4°F to 112°F)
	Long time storage temperature(>1 month)	-20°C to +35°C (-4°F to 95°F)
<b>Physical Characteristics</b>	Length	3.27" (83 mm)
	Width	1.77" (45mm)
	Height	0.71" (18 mm)
	Weight	1.82 oz / 52g (without chargeable battery) 2.73 oz / 78g (with chargeable battery)
	Antenna connector	MC plug -Note: The internal antenna will be disables when an external antenna is connected.
	Power connector	φ 2.1*5.5*9.5 ( The connector look the same as the DC jack of iPAQ 36/38 series PDA. )
<b>Antenna</b>	Antenna type	Built-in Ceramic patch antenna (External antenna optional)

### 2.3. Firmware Characteristics

Items	Description
Core of firmware	SiRF version 2.3
Baud rate	4800
Code type	NMEA-0183 ASCII
Datum	WGS-84
Protocol message	
Output frequency	1 Hz

## 3. Operation

### 3.1. Hardware Description







The Bluetooth GPS has two LED light which each has two colors. One is GPS & Charge status LED, that is named LED 2, and the other is Bluetooth & low power status LED, that is named LED 1. The status table of LED shows as follows:

#### <State Table of LED>

##### LED1

BT & Low Power LED	Description	
	Bluetooth Active	Low Power
LED1 Color and Action		
Blue Flash	Yes	No
Purple-Red Flash	Yes	Yes

## LED2

GPS & Charge LED	Description	
	Battery Charged	Position Fixed
LED2 Color and Action		
Dark 	No	No
Green Flash 	No	Yes
Red 	Yes	No
Orange-Red Flash 	Yes	Yes

<Note1>When the Bluetooth is active and LED 1 lights, it shows Bluetooth RF function. As long as the Bluetooth RF is transmitting the LED light will flash. When Bluetooth doesn't connect the other Bluetooth device, the LED 1 will be flash periodically. Therefore, it means that it broadcasts message to connect the other device with Bluetooth function. If it connects the other Bluetooth device and transmits data, LED 1 will flash very quickly and look like bright.

<Note 2>When the battery is charging, LED 1 will show purple-red color and flash. The reason that Bluetooth is working cause LED 1 purple-red color. If the GPS receiver go to the end of charge, LED 1 will show blue color and flash.

## 3.2. Turn on/off

**Turn on** To turn on the receiver, press the power button on the topside briefly (0.5 seconds). The left LED(LED 2) indicator will flash briefly. The right LED (LED 1) indicator will start flashing.

**Turn off** To turn off the receiver, press the power button on the topside for 3 seconds. The LED indicator will flash briefly before switching off the receiver.

## 3.3. Charging

**Low Power** The right LED(LED 1) indicator will turn RED (normally BLUE) when battery power becomes low. Connect the receiver to a powers source to continue operation and to recharge the battery.

**Charging** The left LED(LED 2) indicator will turn RED (or ORANGE) when the battery is being charged. When fully charged, the RED indicator will switch off.

## 3.4. Bluetooth Communication

**Waiting to connect** The right LED(LED 1) indicator will flash if there is no communication between the receiver and another device.

**Connected** The right LED(LED 1) indicator will turn to continuous lighting when the receiver is connected through the wireless link with another device.

### 3.5. GPS

**Navigating** The left LED(LED 2) will flash GREEN (or ORANGE when charging) if the receiver is able to determine the current position.

### 3.6. PIN CODE

The **PIN** code means Personal Identification Number for Bluetooth device and it is also called as **Pass Key**. The Bluetooth GPS receiver has the default PIN Code, and is “0000”. Generally speaking, there are two steps in Bluetooth connecting. One is pairing process, the other is link process. If you need PIN code to pairing and connect, you can use the default pin code, “0000” to connect Bluetooth device. Our GPS receiver belongs to non-safety connecting, you can use in general application to finish connecting.

## 4. Notices

### 4.1. Global Positioning System

The Global Positioning System (GPS) is operated and maintained by the Government of the United States of America who are responsible for the availability and the accuracy of the system. Changes in the operation, availability and accuracy may affect the operation of your GPS receiver.

### 4.2. Aircraft and Hospitals

Use of devices with an antenna is prohibited on most aircraft and in many hospitals. The TomTom Wireless GPS receiver is a receiving and transmitting device with two antenna’s and should not be used in these environments.

### 4.3. Heat Reflective Shields

Modern vehicles may have a heat reflective shield in the windshield, preventing proper GPS signal reception if the receiver is placed under the windshield. To get proper reception:

- (a) Use an external antenna, or
- (b) Place the receiver in a different position, or
- (c) Attach the cradle to the windshield behind the rearview mirror, where many vehicles have an opening in the heat reflective shield, indicated by a black outline.

### 4.4. Important

The information in this document is subject to change without notice. No liability shall be assumed for technical or editorial errors or omissions contained herein; nor for incidental or consequential damages resulting from the performance or use of this material. This document contains information protected by copyright.



## 5.5 Battery

This product uses a Lithium-Ion battery. Please charge fully before first use. Operation in low (below 0° C/32°F or high (over 40°C/110°F) temperatures will affect power supply efficiency and the ability to charge the battery. All Lithium-Ion batteries will experience power supply efficiency deterioration over time even if not used and have a limited life expectancy. Permanently powering the battery will reduce life expectancy. Do not use your product in a humid, wet and/or corrosive environment. Do not put, store or leave your product in or near a heat source or in a high temperature location and do not expose it to temperature over 60°C(140°F). Failure to follow these guidelines may cause the Lithium-Ion battery to become hot, explode or ignite and cause injury and/or damage. **THE LITHIUM-ION BATTERY CONTAINED IN THE PRODUCT MUST BE RECYCLED OR DISPOSED OF PROPERLY. USE ONLY WITH SUPPLIED CHARGER(S) AND SUPPLIED AC ADAPTOR FOR BATTERY CHARGING.**

## 5.6 FCC

This equipment has been tested and found to comply with the limits for a Class B digital device, pursuant to Part 15 of the FCC Rules. These limits are designed to provide reasonable protection against harmful interference in a residential installation. This equipment generates, uses and can radiate radio frequency energy and, if not installed and used in accordance with the instructions, may cause harmful interference to radio communications. However, there is no guarantee that interference will not occur in a particular installation. If this equipment does cause harmful interference to radio or television reception, which can be determined by turning the equipment off and on, the user is encouraged to try to correct the interference by one or more of the following measures:

- Reorient or relocate the receiving antenna.
- Increase the separation between the equipment and receiver.
- Connect the equipment into an outlet on a circuit different from that to which the receiver is connected.
- Consult the dealer or an experienced radio/TV technician for help.

### **CAUTION**

Any changes or modifications not expressly approved by the grantee of this device could void the user's authority to operate the equipment.

### **FCC RF Radiation Exposure Statement**

This equipment complies with FCC RF radiation exposure limits set forth for an uncontrolled environment. This equipment should be installed and operated with a minimum distance of 20cm between the radiator and your body.

## Appendix A Software Install

### iPAQ Bluetooth Setup with Pocket PC software

<Note 1> These steps apply to the PDA with Bluetooth function, for example iPAQ 3870 or 3970 PDA



<Note2> The operation system of iPAQ Pocket PC is Chinese Window CE version and shows as follow. The English version should be similar with Chinese.

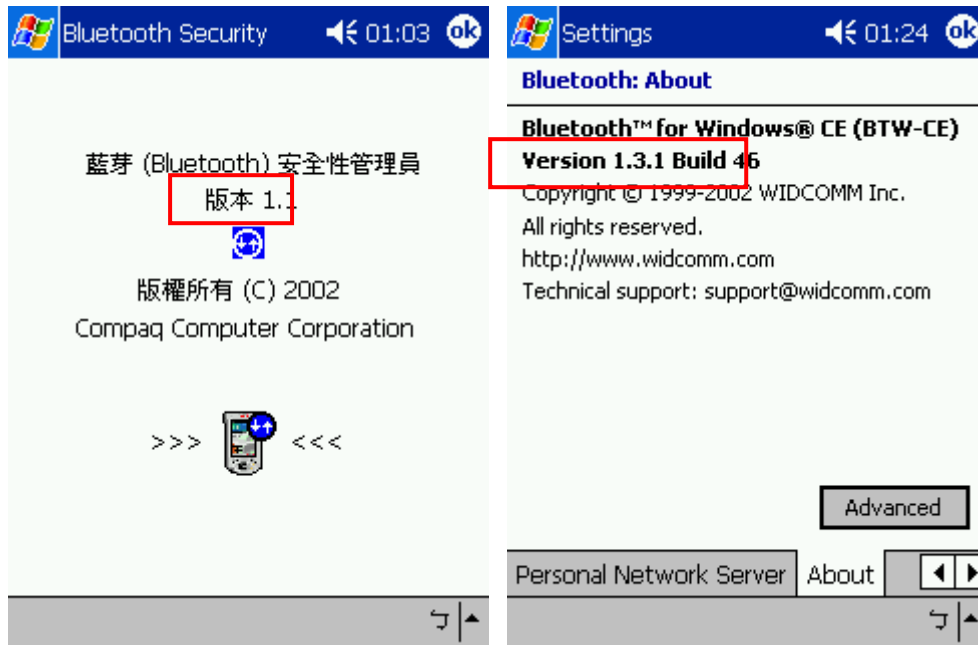
<Illustration> Bluetooth GPS receiver and iPAQ h3970 device



There are several steps to use Leadtek Bluetooth GPS(9537) with PDA (Bluetooth Built-in PDA or PDA with Bluetooth CF card) for user. Since the version of BTW-CE (Widcomm Bluetooth Manager) may be different for all PDA, there two operations introduced in the manual.

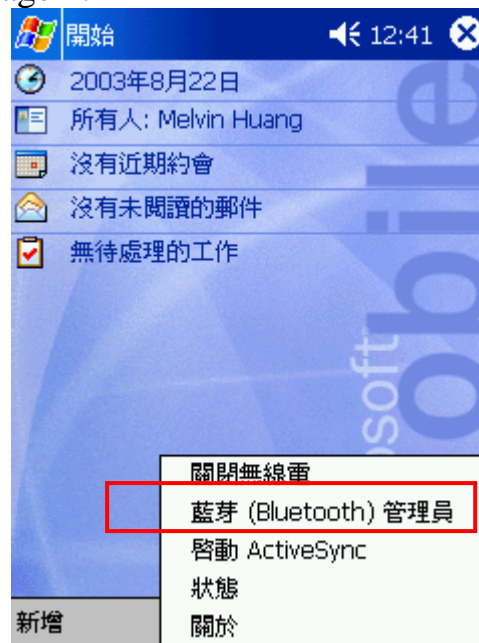
#### 1. How to Check The Version of Bluetooth Manager

It's very simple to check the version of BTW-CE. If BTWCE is installed in the PDA, there will be a Bluetooth icon (  or  ) displayed in the right of the bottom of screen. The information and the declaration for copyright of BTWCE will be shown in "about" page.



## 2. BTWCE 1.1

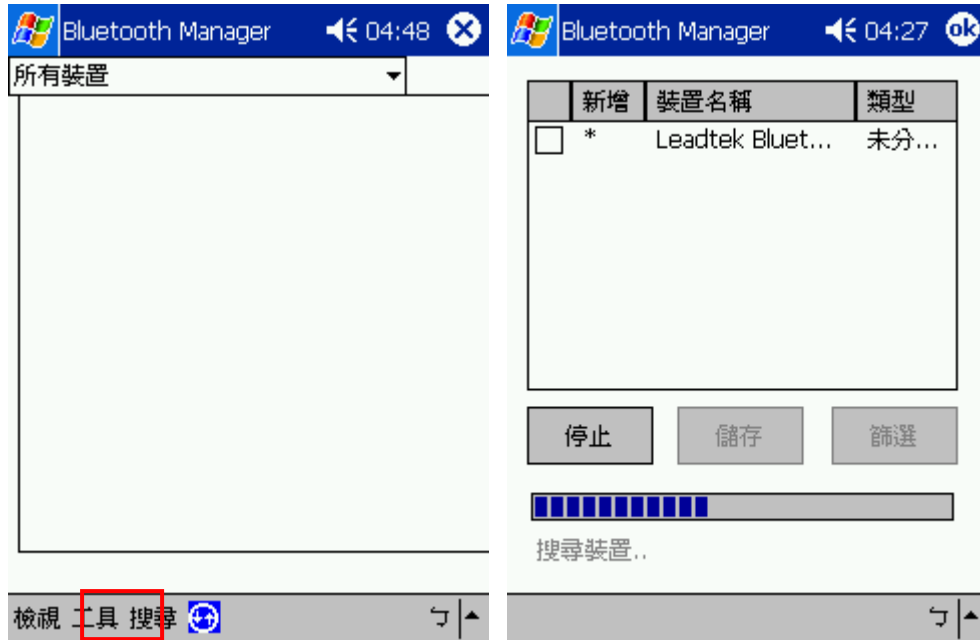
- (1) Make sure that the Bluetooth Device is powered on.
- (2) Select “Bluetooth Manager”.



- (3) When the Bluetooth Manager is executed, the user can check COM port configuration. Choose “Tool”, and then select “Setup all Device”. Then in “Serial Port” Page, the user will see Outbound COM Port which will be used by application. In this case, the com port is 8.



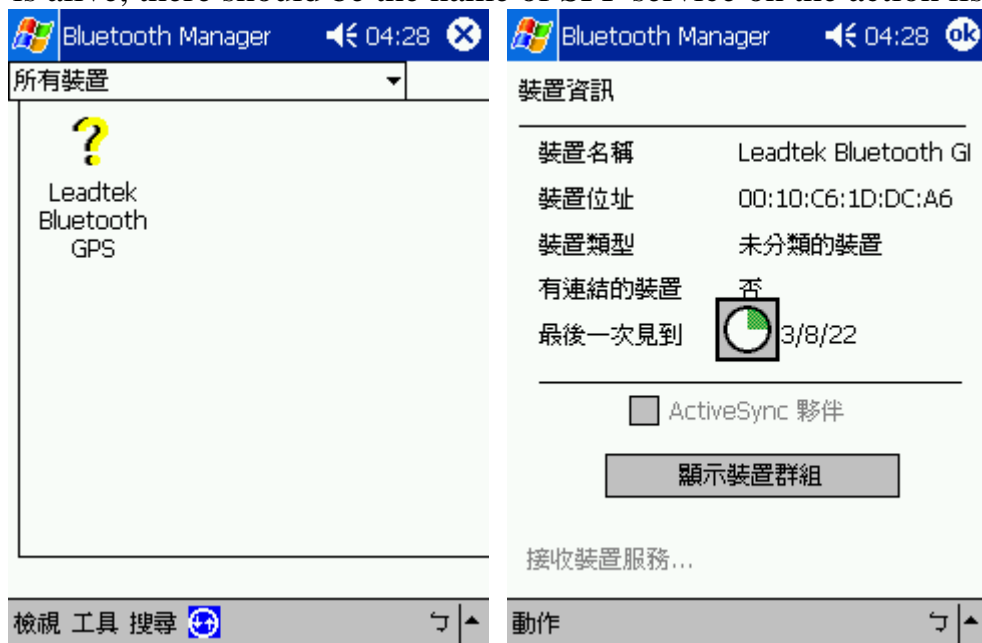
(4) Select “Search” to find target device, then BTW-CE will start to search nearby Bluetooth device.



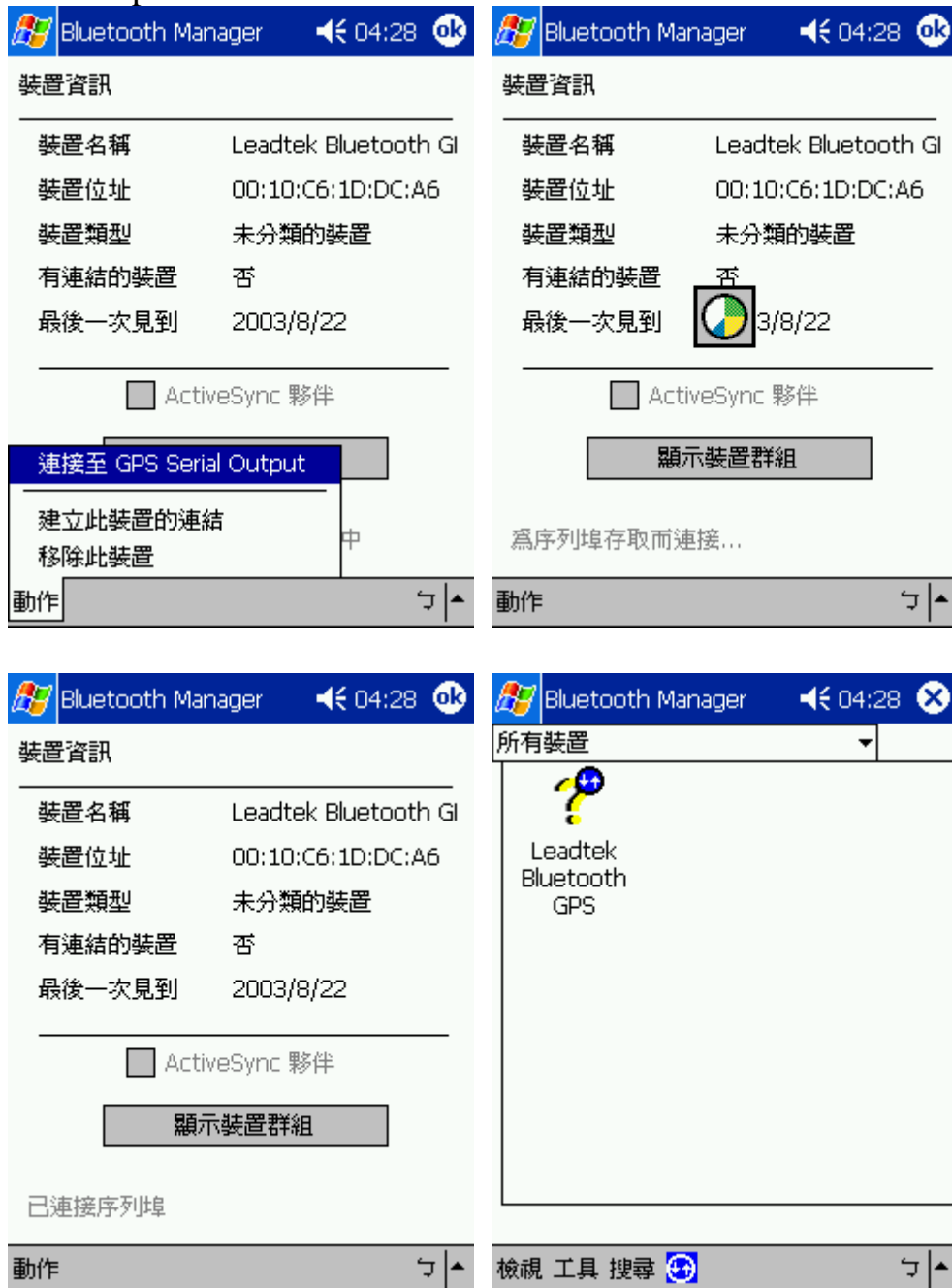
Finishing searching and “Leadtek Bluetooth GPS” found, select the target and save it for selected group. In this case, the target device is saved to default group. Then click to save the target.



(5) Back to the main form of BTW-CE, if there're devices saved, the device list should be seen. Then double-click the target device, BTW-CE will start to search the service provided by the target device for a while. After searching services, if the device is alive, there should be the name of SPP service on the action list.



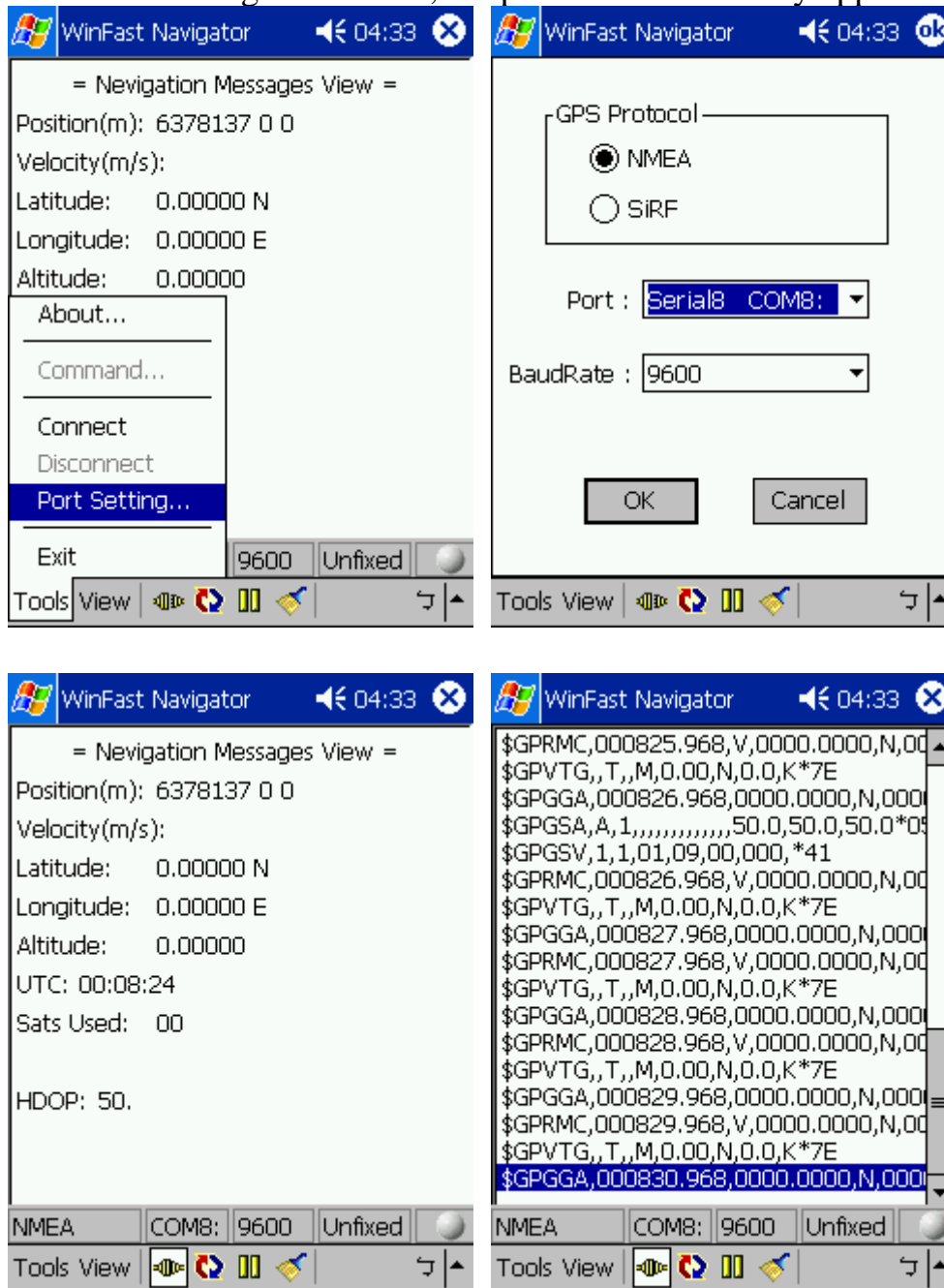
(6) In this case, “GPS Serial Output” is on the list for the SPP service. Select “Link to GPS Serial Output” to start to establish the serial link.



The screenshots illustrate the steps in the Bluetooth Manager application:

- Top Left:** Shows the device information for "Leadtek Bluetooth GI" with address "00:10:C6:1D:DC:A6". A context menu is open over the "GPS Serial Output" service, with options "建立此裝置的連結" (Link to this device) and "移除此裝置" (Remove this device).
- Top Right:** Shows the same device information. A "顯示裝置群組" (Show device group) button is visible, and the status indicates "為序列埠存取而連接..." (Connecting for serial port access...).
- Bottom Left:** Shows the device information. The "顯示裝置群組" button is highlighted. The status at the bottom indicates "已連接序列埠" (Serial port connected).
- Bottom Right:** Shows the "所有裝置" (All devices) list, which contains one entry: "Leadtek Bluetooth GPS". The status bar at the bottom includes "檢視 工具 搜尋" (View Tools Search).

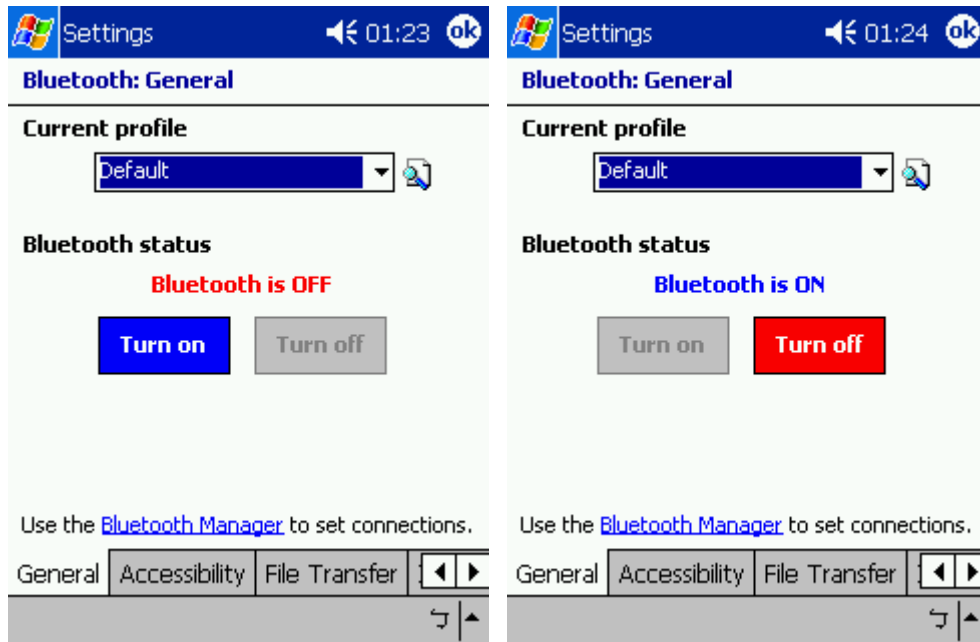
(7) As the connection being established, the port could be used by application.



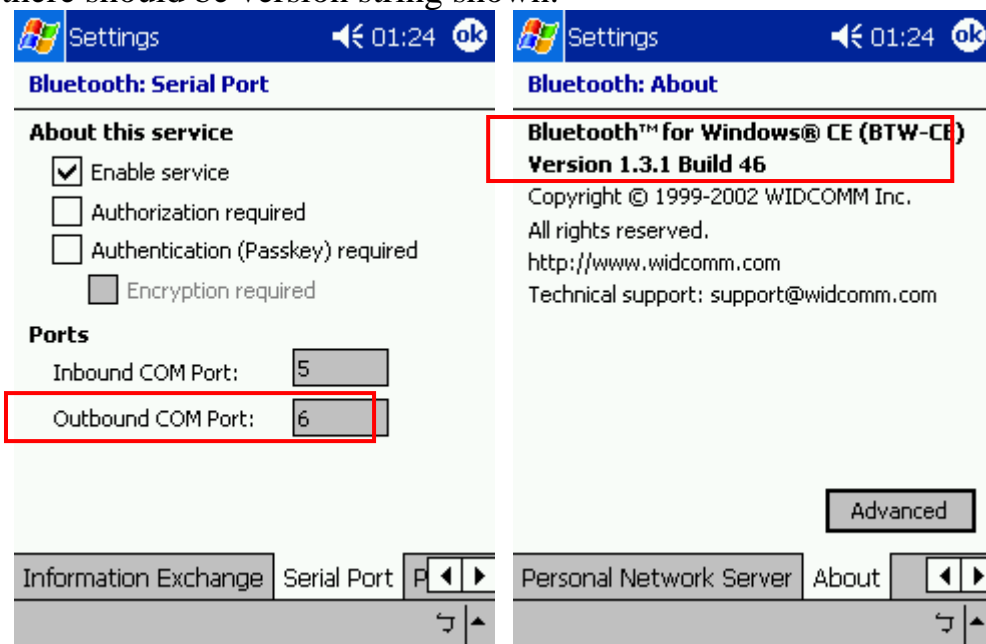
(8) Since BTW-CE will remember the last device linked to, the user doesn't have to go the previous steps when going to use the Bluetooth device. Applications could open the serial port directly, and then BTW-CE will smartly try to connect to the last linked device. However, if there's other device the user want to use, the steps should be done again.

### 3. BTWCE 1.3

(1) Make sure that the status of Bluetooth is on.

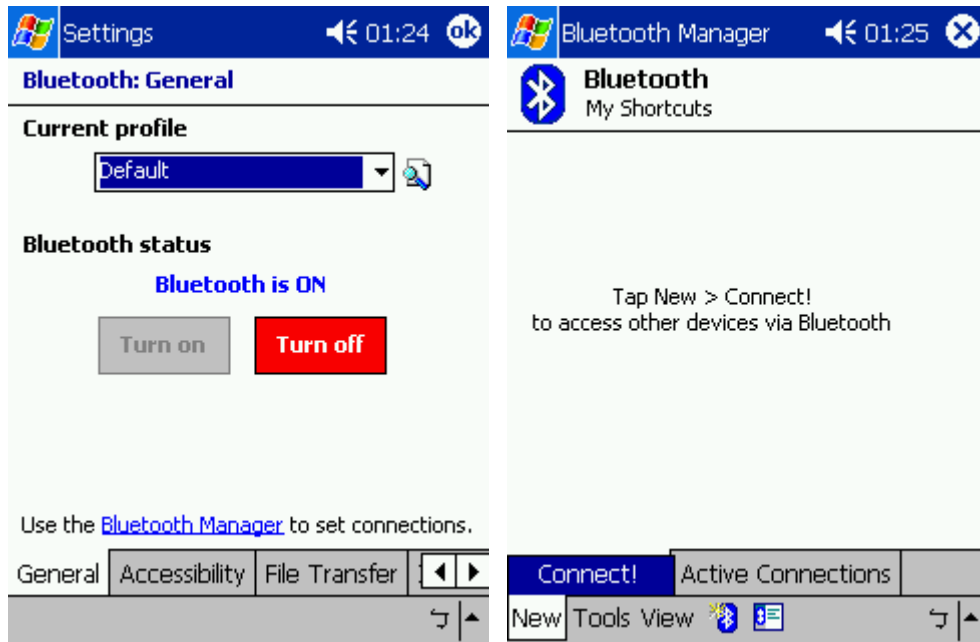


(2) Change the page to “Serial Port”, then check which com port used as “Outbound COM Port”. In this case, the number of com port is 6. And then change to “about” page, there should be version string shown.

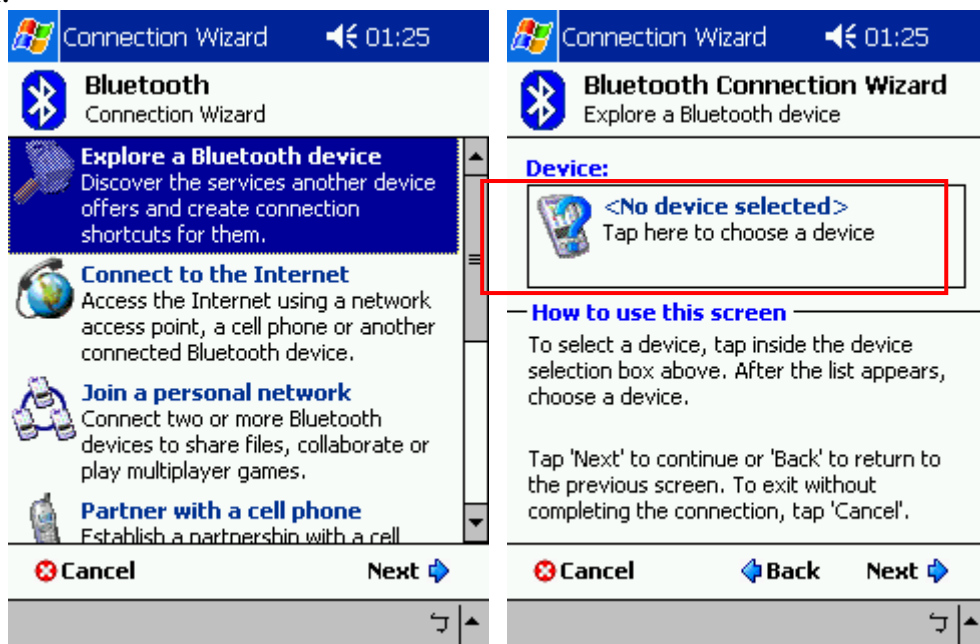




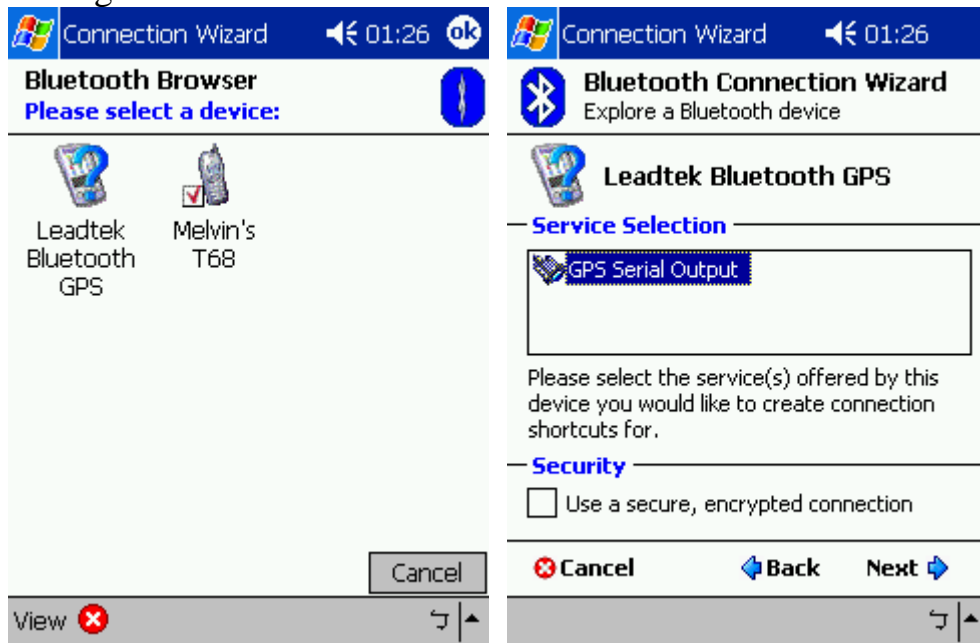
(3) Click the “Bluetooth Manager” in “General” page. Select “New” and “Connect!” to add new device.



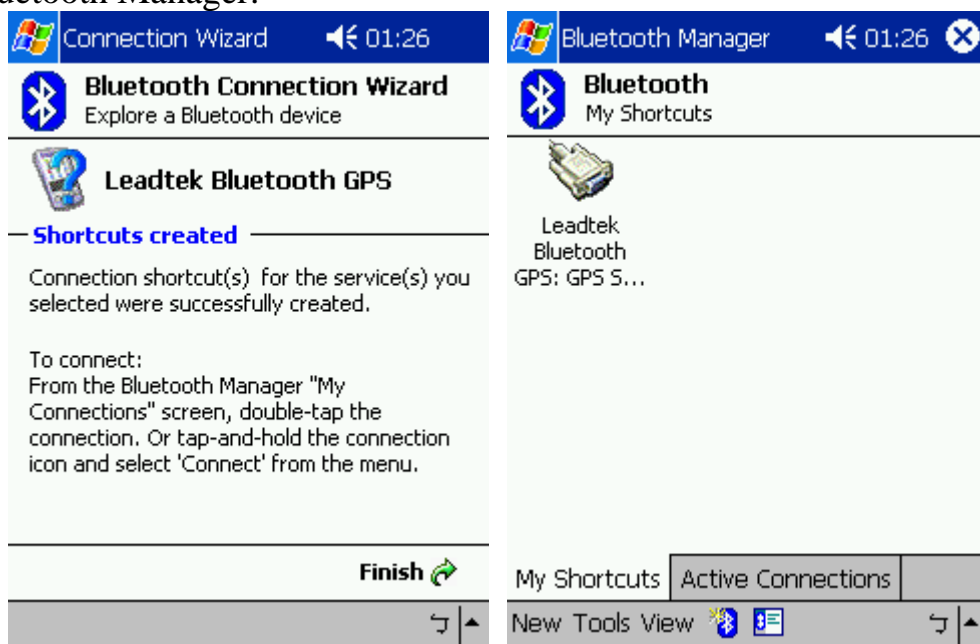
(4) Then the Bluetooth Connection Wizard will be executed. Select “Explore a Bluetooth device” and click “Next”. Tab the Device frame on the form to start to search.



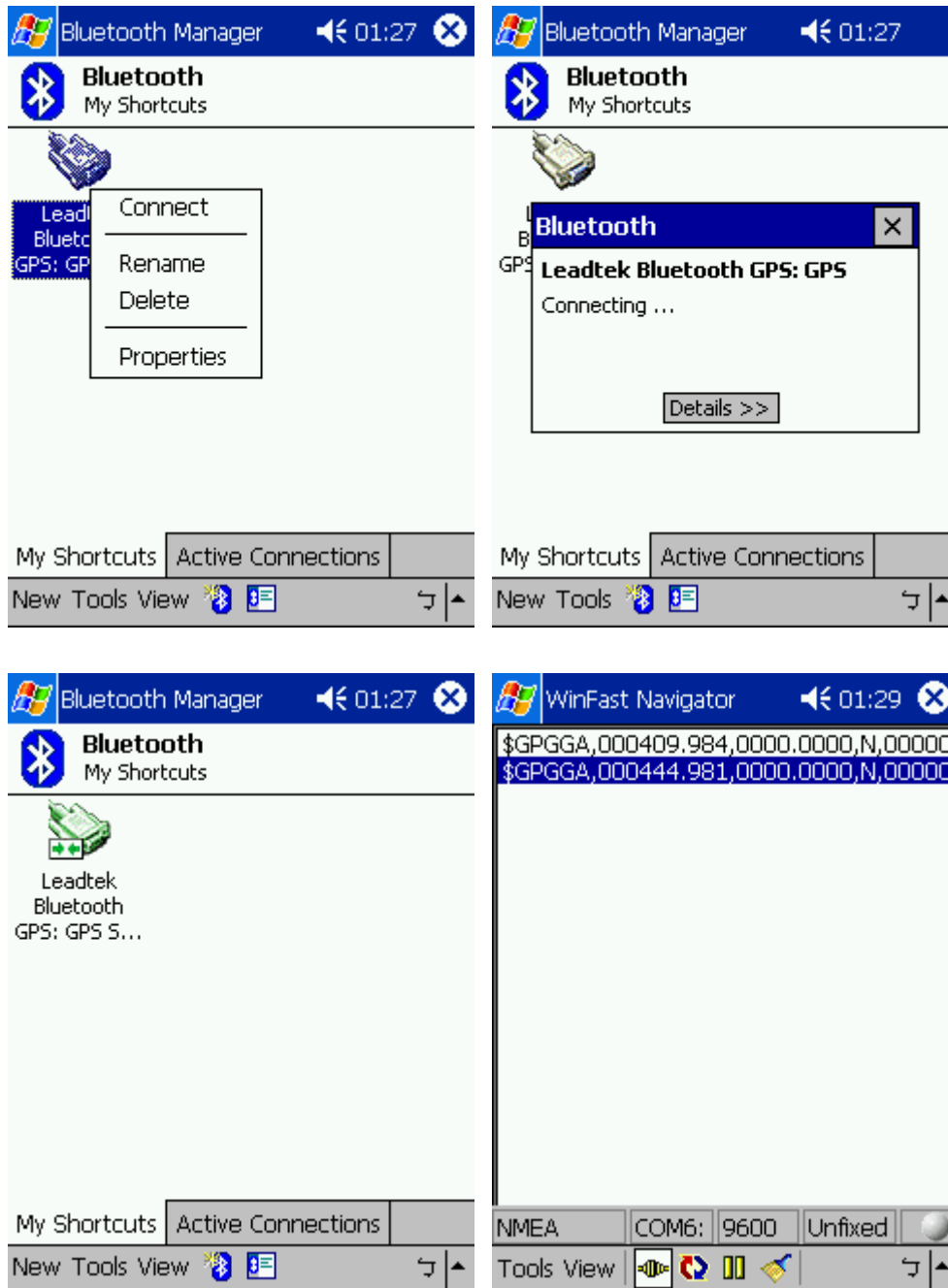
(5) After searching, the found devices will list. Click on the target to find service. If the SPP service is found, the service name will be shown in Device frame. Then select the target service and click “Next”.



(6) After the previous steps, the wizard will show the message to tell the user that the link shortcut has been established. It means that the user could see the shortcut in the Bluetooth Manager.



(7) Select the target and hold on it for a while, then the sub-menu will pop-up. Select “Connect” to establish the link. If successful, the icon of target device will turn into green. As the connection has been established, application could open the port.



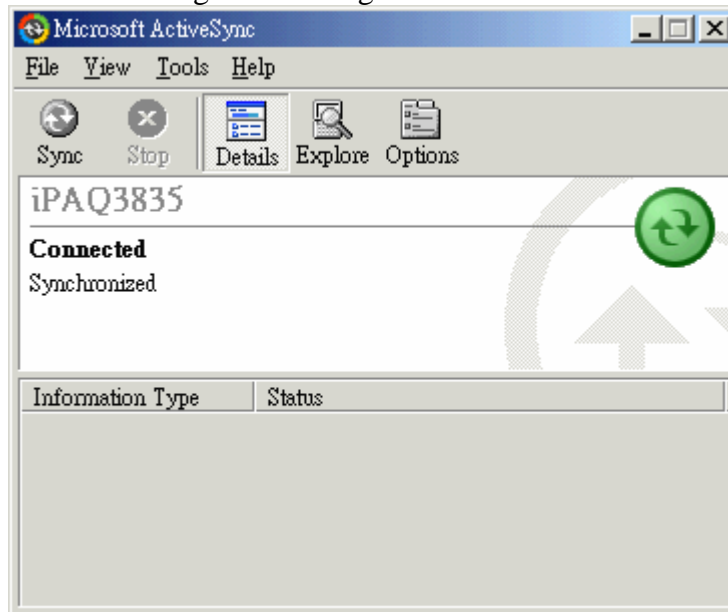
BTW-CE 1.3 won't remember the last linked device. Instead, when the application try to open the outbound port, if the port is not link to the target previously, then the Bluetooth Manager will pop-up. And the user would select the shortcut of the target device to

complete the connection

## Appendix C Installing WinFast Navigator for Pocket PC

### Note :

Microsoft ActiveSync has to be installed on your computer when you install WinFast Navigator. The application interface is shown in the figure to the right.



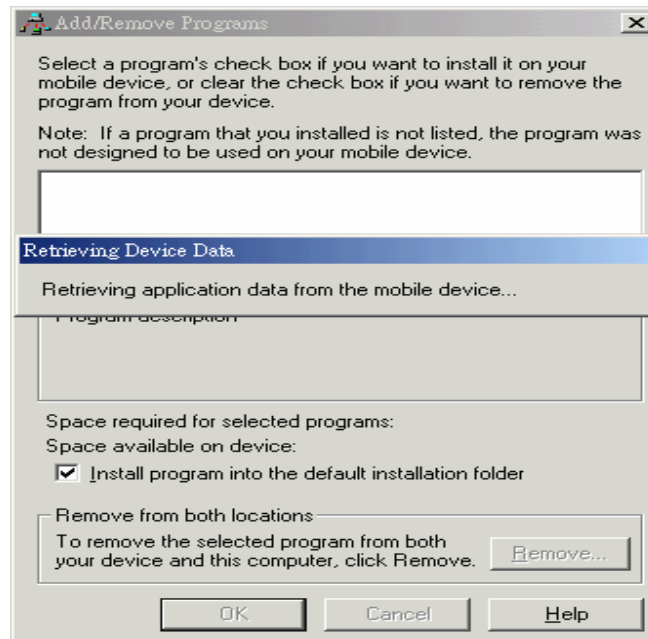
### Step 1.

Insert the software CD in your CD-ROM drive. The setup screen appears as shown in the figure to the right. If the setup screen does not appear automatically, run install.exe on the CD. Click WinFast Navigator CE to initialize the installation.



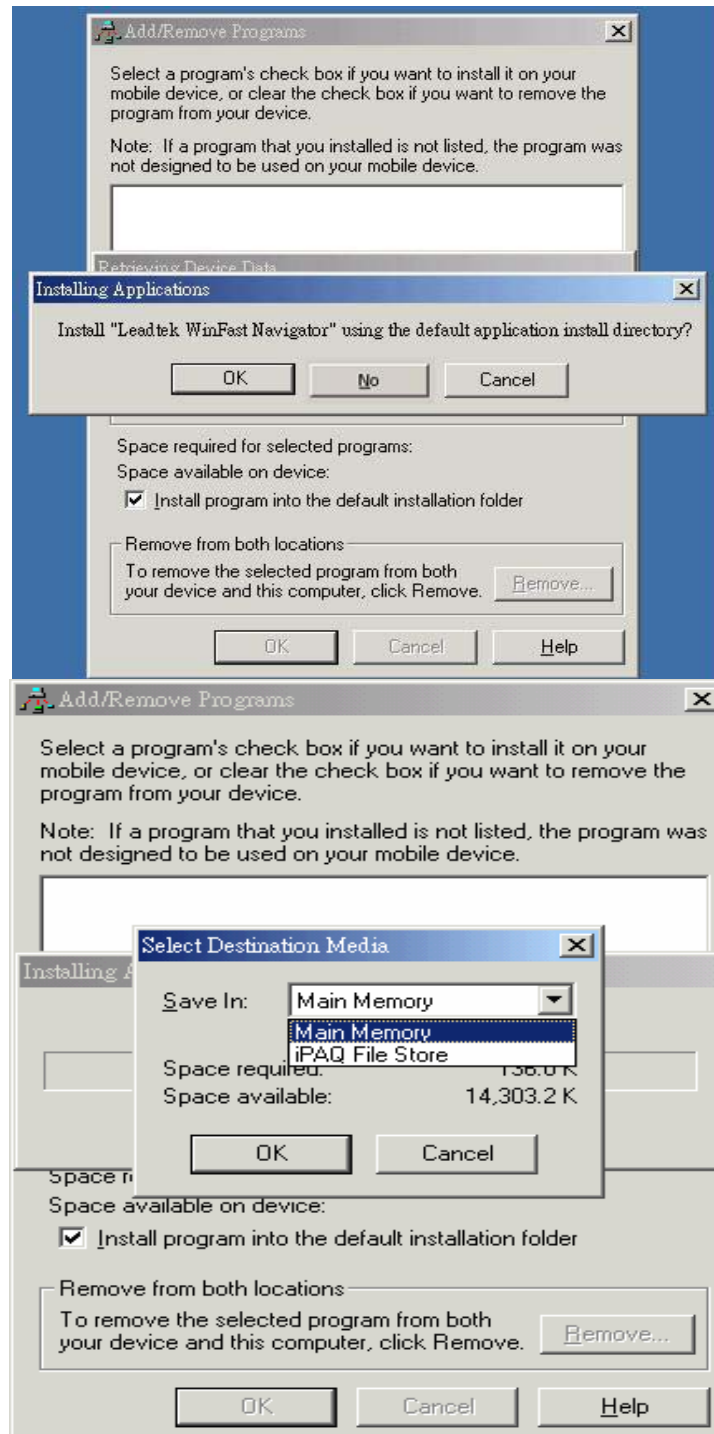
**Step 2.**

The Add/Remove Programs dialog box appears. An information box on top of it tells you the application is Retrieving application data from the mobile device.



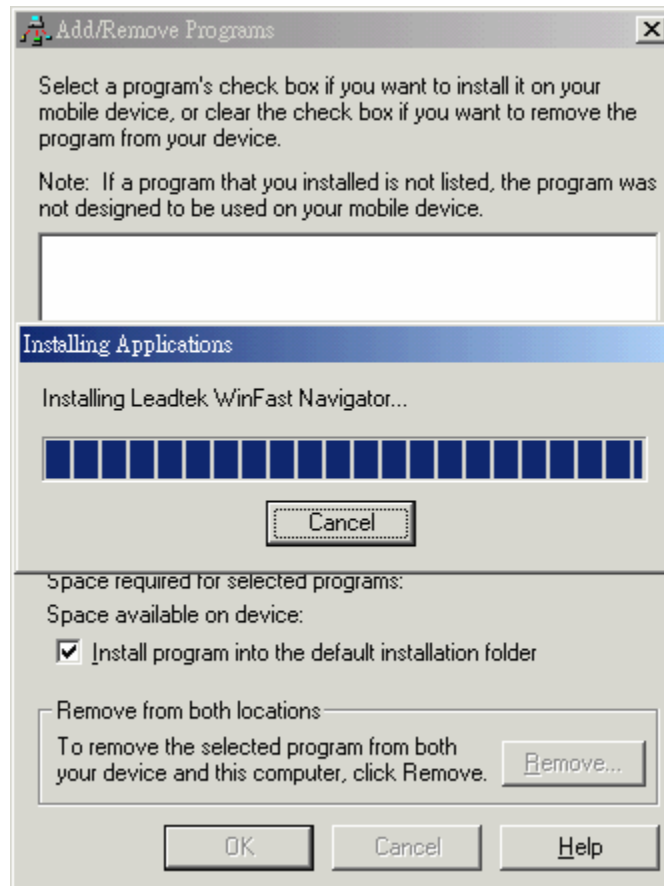
**Step 3.**

The application will next determine the destination location. A dialog box appears asking if you want to install the application at the default location, which is Main Memory on your PDA/pocket PC. Click Yes to install WinFast Navigator at that location. Click No to change the location using the next dialog box (see the second figure) which contains a selection box with 2 destination options: Main Memory and iPAQ File Store. Select one as desired and then click OK.



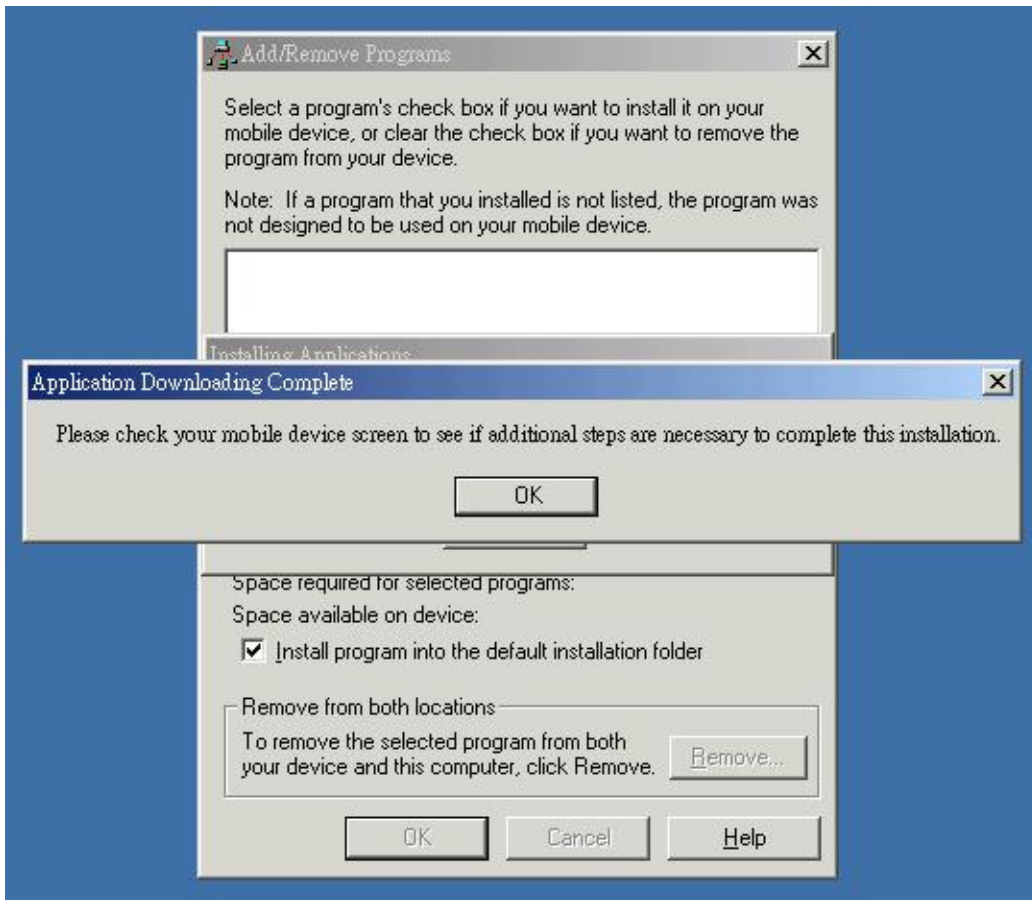
**Step 4.**

A dialog box appears showing the progress of installation.



**Step 5.**

When the installation is completed, a dialog box tells you to check your mobile device screen to see if additional steps are necessary to complete this installation. Click OK.



## Appendix C Test Reference for Only

### PC Bluetooth Setup with Widcomm BTW

<Note>This software does belong to copyright reserved of Widcomm company and



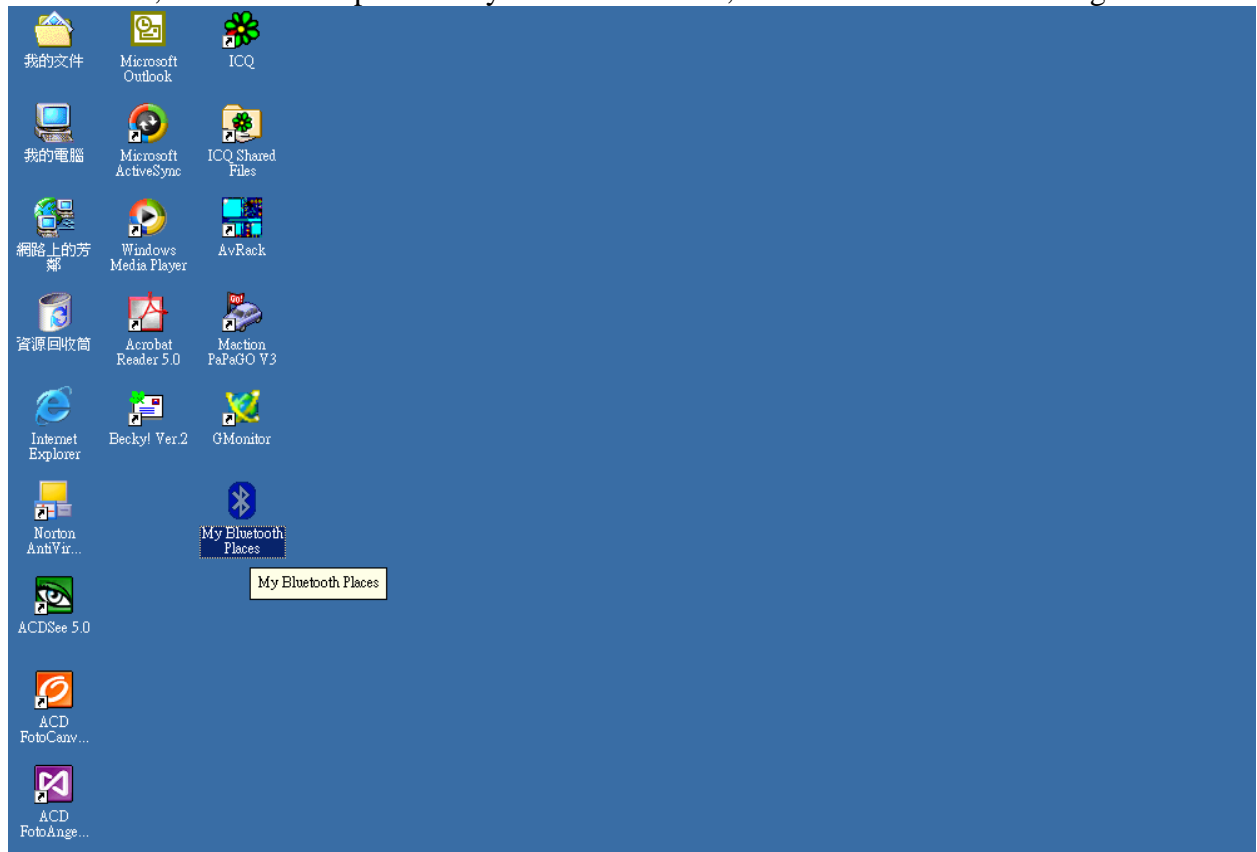
**you have to get the authorized software to use it. The follow method is only for reference.**

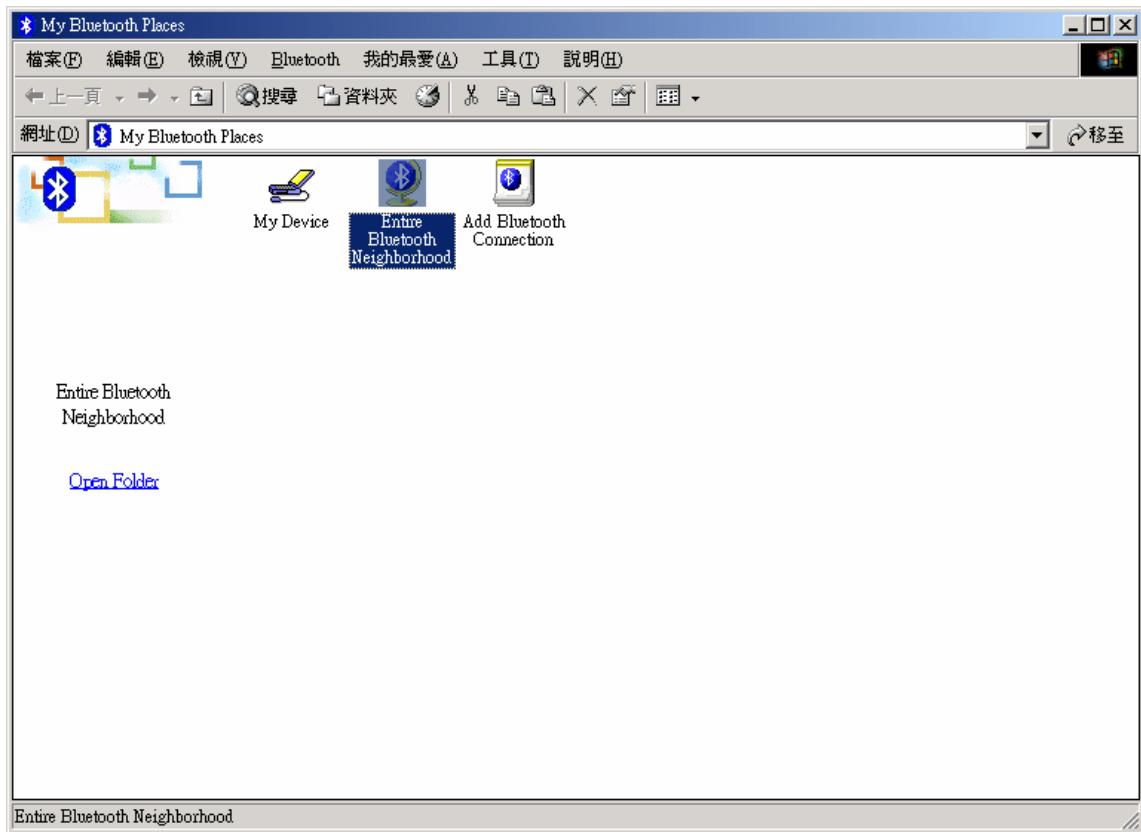
The Bluetooth Serial Port service allows two Bluetooth devices to establish a wireless connection through virtual communications ports and then use that connection as if it were a hardwired serial cable between the devices.

To establish a Bluetooth serial port connection:

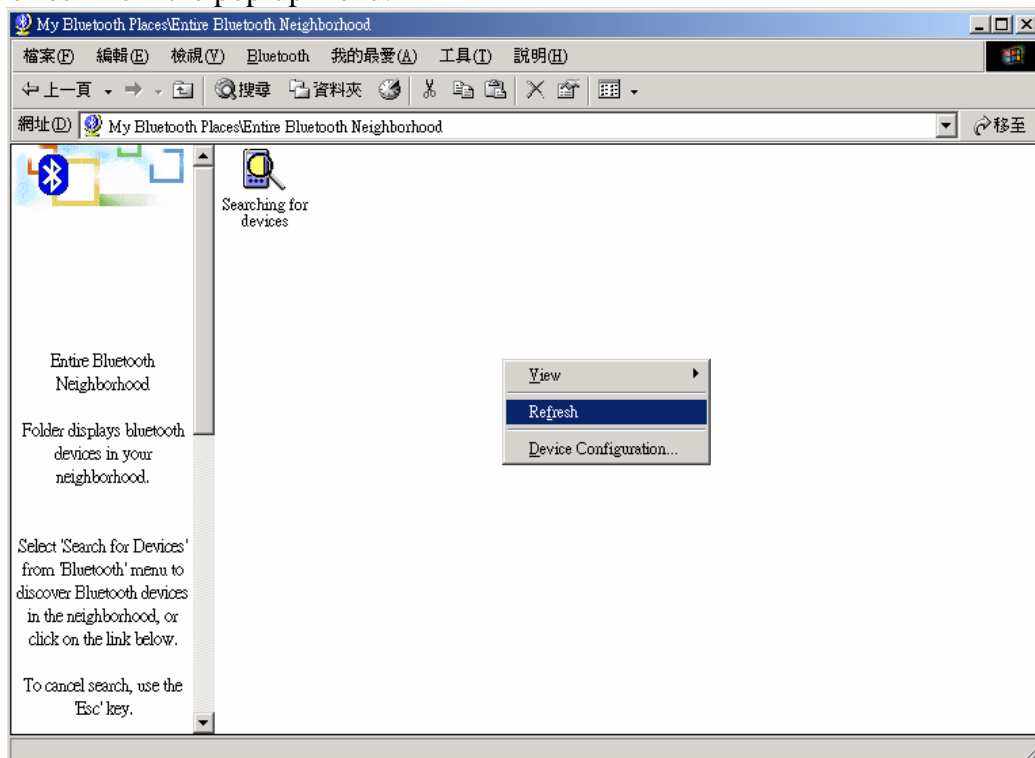
Connections are initiated from the client:

<1> On the client, in the Folders pane of My Bluetooth Places, select Entire Bluetooth Neighborhood.

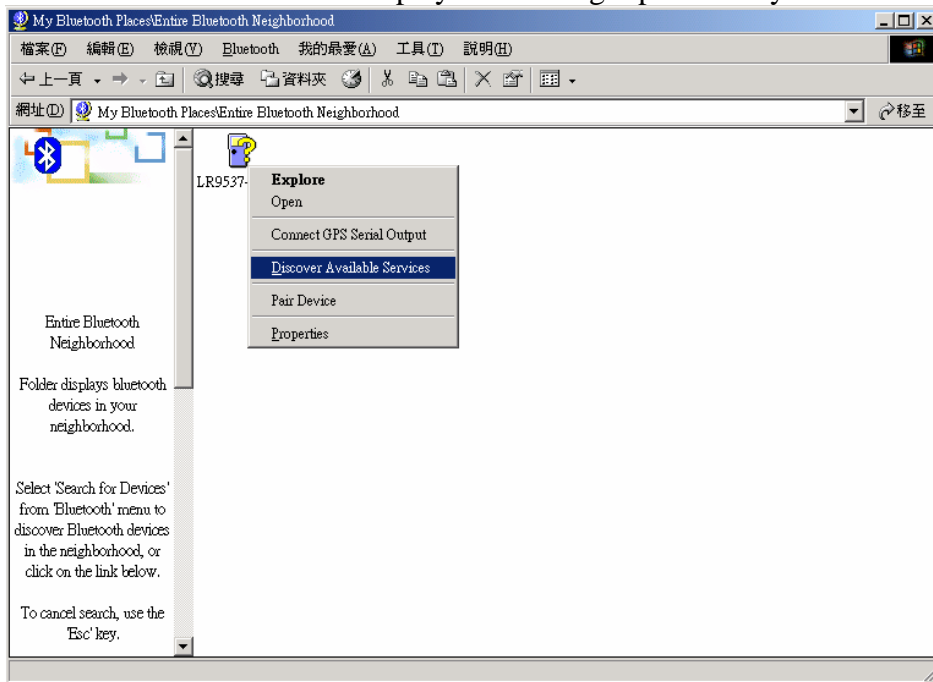




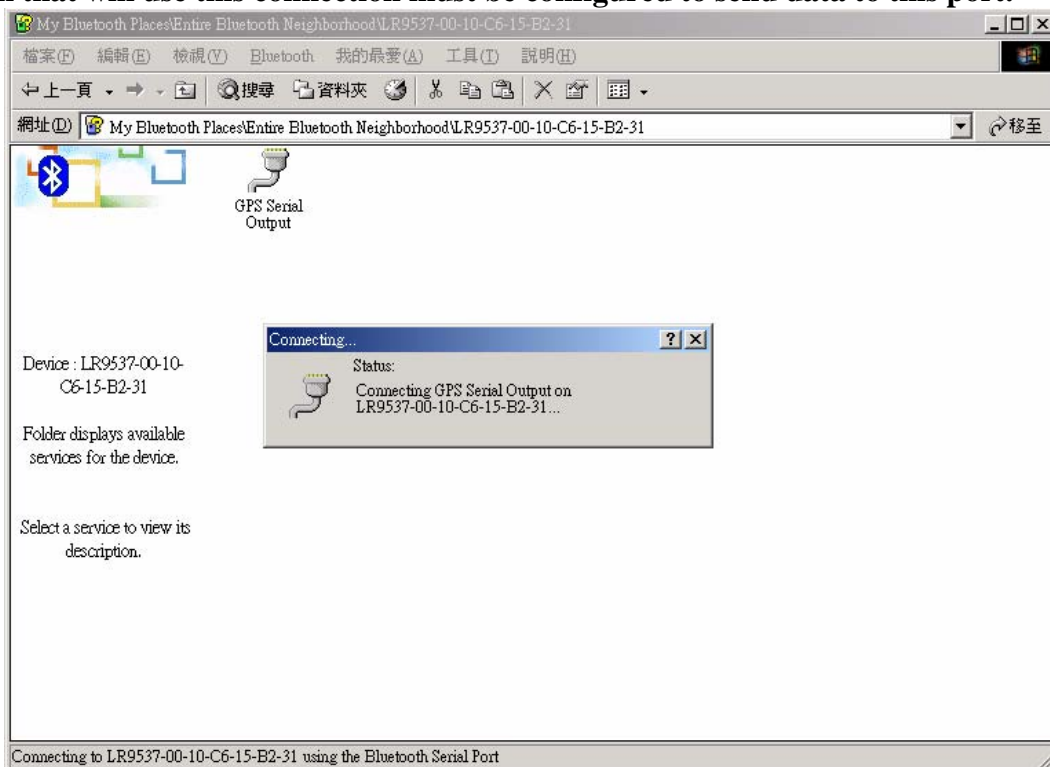
<2> In the right pane of Entire Bluetooth Neighborhood, right-click anywhere except on a device name and select Refresh from the pop-up menu.

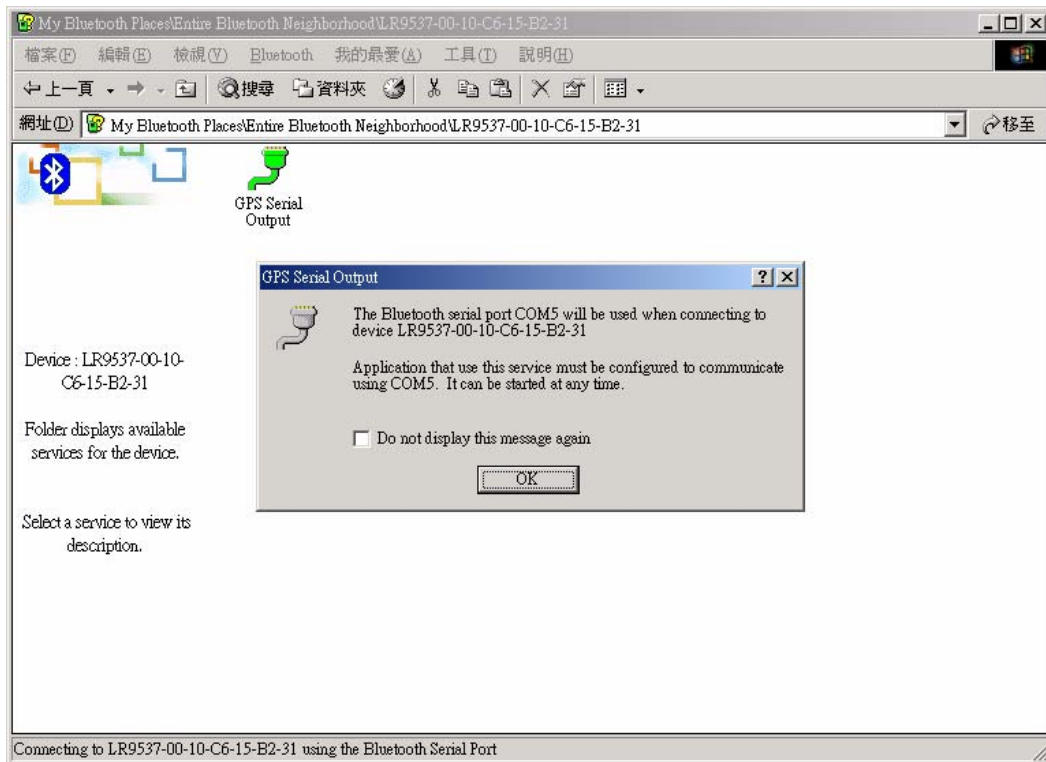


<3> In the Folders pane of My Bluetooth Places, right-click the server you want to establish a connection with and select Discover Available Services from the popup menu to update the available services list. The available services will be displayed in the right pane of My Bluetooth Places.



<4> In the right pane of My Bluetooth Places, double-click Bluetooth Serial Port. A dialog box appears that contains the communications port number assigned to this connection by the client. **The application that will use this connection must be configured to send data to this port.**

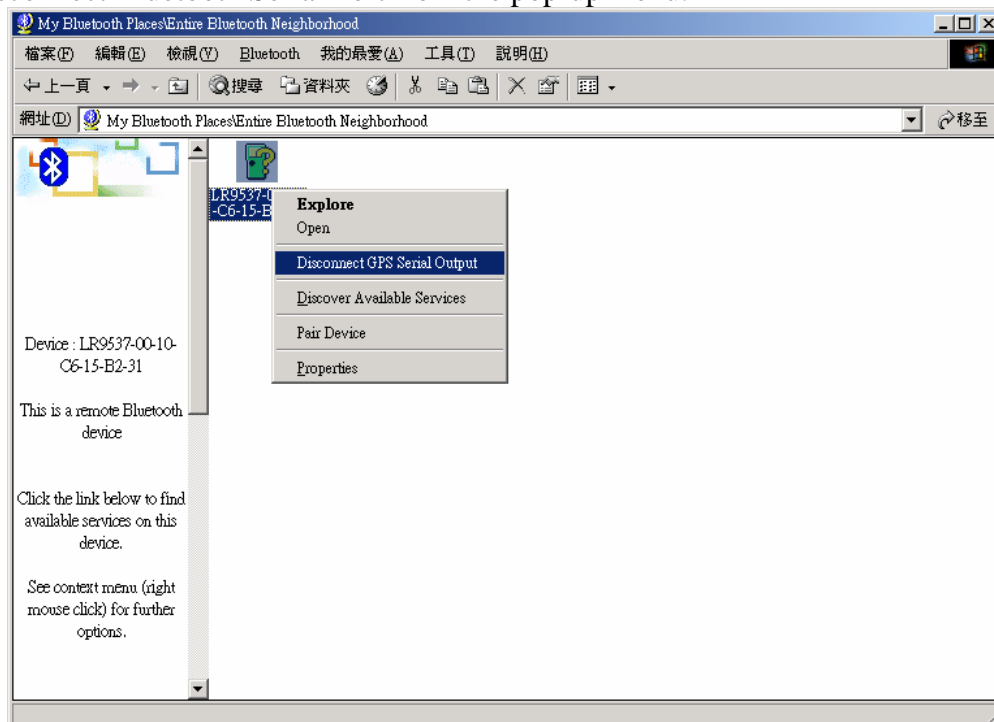




To close a Bluetooth serial port connection

Connections are normally closed from the client:

- On the client, in the Folders pane of My Bluetooth Places, select (highlight) the device that is providing the Bluetooth Serial Port service.
- In the right pane of My Bluetooth Places, right-click Bluetooth Serial Port and then select Disconnect Bluetooth Serial Port from the pop-up menu.





**Leadtek Research Inc.:** 18F, 166, Chien-Yi Rd., Chung Ho, Taipei Hsien, Taiwan (235)  
Phone: +886-(0)2 8226 5800 Fax: +886-(0)2 8226 5801

**Leadtek U.S.A.:** 46721 Fremont Blvd., Fremont, CA94538, U.S.A.  
Phone: +510 490 8076 Fax: +510 490 7759

**Leadtek Research Europe B.V. :** Antennestraat 16 1322 AB, Almere – The Netherlands  
Tel:+31(0)36 536 55 78 Fax:+31(0)36 536 22 15  
E-mail: [service@leadtek.com.tw](mailto:service@leadtek.com.tw) Home Page: [www.leadtek.com.tw](http://www.leadtek.com.tw)