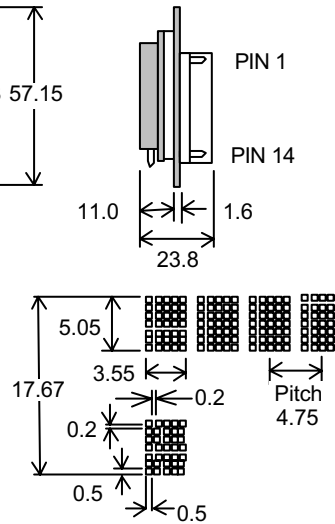
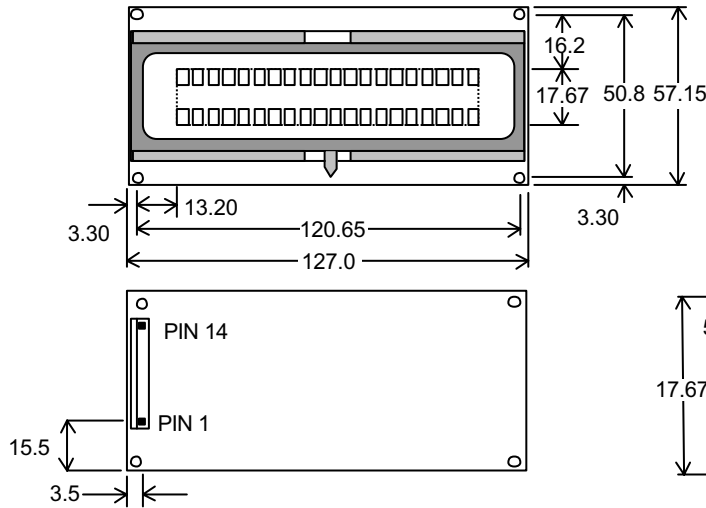


Vacuum Fluorescent Display Module CU20025SCPB-KT70A

- ❑ 2 Line x 20 Characters
- ❑ High Brightness Blue Green Display
- ❑ 5mm High 5x7 Dot Matrix Character
- ❑ Single 5V Supply
- ❑ ASCII + Extended Character Font
- ❑ 8 Bit Parallel Interface

This single board display module includes a high brightness VF display of 40 dot matrix characters, a microprocessor, refresh memory, the necessary control logic and a DC/DC converter. An 8 bit parallel interface provides host communication. Other versions of this module offer alternative fonts.



DATA CONNECTOR	
PIN	FUNCTION
1	Busy
2	Write
3	D7
4	D6
5	D5
6	D4
7	D3
8	D2
9	D1
10	D0
11	+5V
12	0V (GND)
13	NC
14	RESET

Dimensions in mm & subject to tolerances. Mounting holes 3.5mm dia.

ELECTRICAL SPECIFICATION

Parameter	Symbol	Value	Condition
Power Supply Voltage	VCC	5VDC +/- 10%	GND=0V
Power Supply Current	ICC	Typ. 400 mAdc	VCC=5V
Logic High Input	VIH	3.15VDC min.	VCC=5V
Logic Low Input	VIL	1.35VDC max.	VCC=5V

OPTICAL and ENVIRONMENTAL SPECIFICATION

Parameter	Value
Character Size (X x Y)	3.55mm x 5.05mm
Character Pitch	4.75mm
Luminance	Min 855 cd/m ² (250 fL)
Colour of Illumination	Blue-Green (505nm)
Operating Temperature	-10°C to + 55°C
Storage Temperature	-20°C to + 70°C
Operating Humidity	20 to 80% RH (non condensing)

CHARACTER SET

	00	01	02	03	04	05	06	07	08	09	0A	0B	0C	0D	0E	0F
00																
10																
20	!	"	#	\$	%	&	'	()	*	+	,	-	.	/	
30	0	1	2	3	4	5	6	7	8	9	:	;	<	=	>	?
40	a	A	B	C	D	E	F	G	H	I	J	K	L	M	N	O
50	P	Q	R	S	T	U	V	W	X	Y	Z	[]	^	_	
60	i	a	b	c	d	e	f	g	h	i	j	k	l	m	n	o
70	p	a	r	s	t	u	v	w	x	y	z	{	}	~	*	
80																
90																
A0	ä	å	æ	ç	è	é	ê	ë	ì	í	î	ï	ñ	ò	ó	
B0	ô	õ	ä	å	æ	ç	è	é	ê	ë	ì	í	î	ï	ñ	ò
C0	á	â	ã	ä	å	æ	ç	è	é	ê	ë	ì	í	î	ï	ñ
D0	í	â	ã	ä	å	æ	ç	è	é	ê	ë	ì	í	î	ï	ñ
E0	ê	ë	ì	í	î	ï	ñ	ò	ó	ô	õ	ä	å	æ	ç	è
F0																

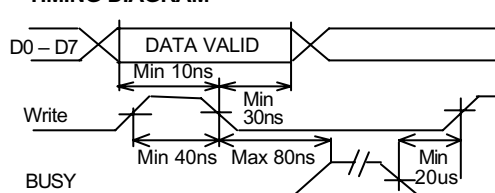
SOFTWARE COMMANDS

N'mon	Hex	Function
BS	08	Back Space
HT	09	Horizontal Tab
LF	0A	Line Feed
CR	0D	Carriage Return
CF	0E	Cursor Off
CN	0F	Cursor On
NW	11	Normal Write
OW	12	Over Write
SW	13	Scroll Write
RS	14	Reset
CD	15	Clear Display
CH	16	Cursor Home
NB	19	Bit 7 high (next byte only)
CP	1B	Cursor Positioning
B1	1C	Brightness Level 1 12%
B2	1D	Brightness Level 2 25%
B3	1E	Brightness Level 3 50%
B4	1F	Brightness Level 4 100%

RESET

Default Settings
Clear Display
Cursor Off
Cursor Home
Normal Write

TIMING DIAGRAM



CONTACT

Noritake Sales Office Tel Nos
 Nagoya Japan: +81 (0)52-561-9867
 Canada: +1-416-291-2946
 Chicago USA: +1-847-439-9020
 Munchen (D): +49 (0)89-3214-290
 Itron UK: +44 (0)1493 601144
 Rest Europe: +49 (0)61-0520-9220
www.noritake-itron.com

Subject to change without notice.
 UK Doc Ref: 02944 Iss:3 26July01